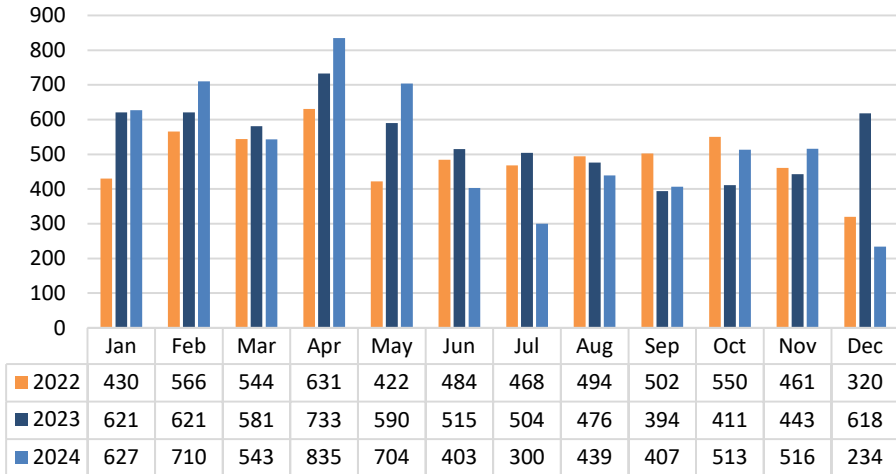


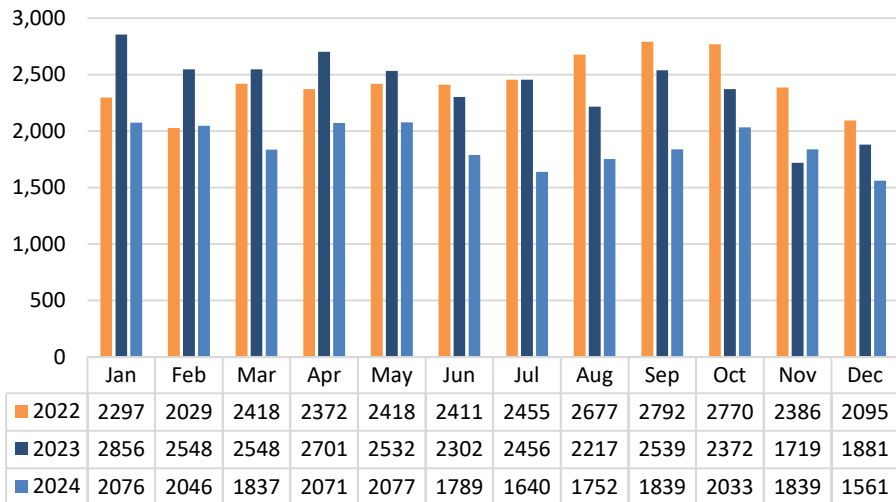
Police Department - As of December 2024

Traffic stops



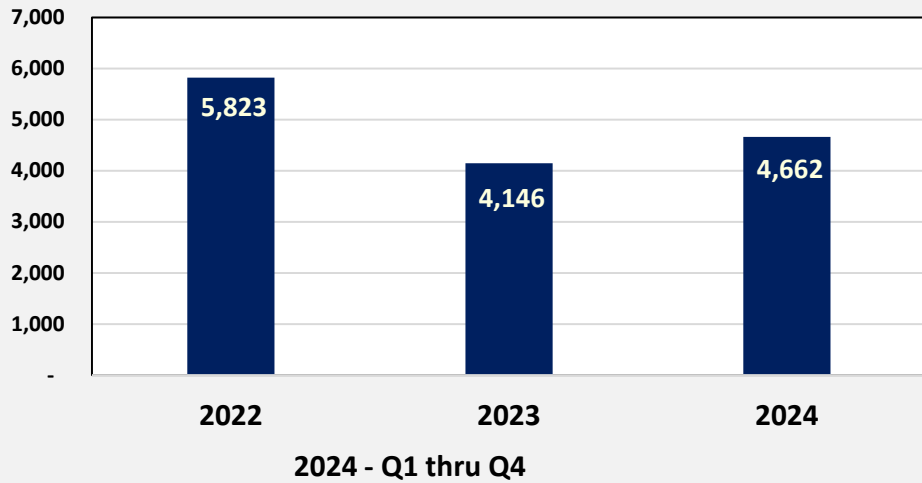
Traffic Stops: Number of traffic stops recorded, whether or not a summons was issued. Staffing levels and call volume, among other variables, will have an effect on this number.

Police Service Calls



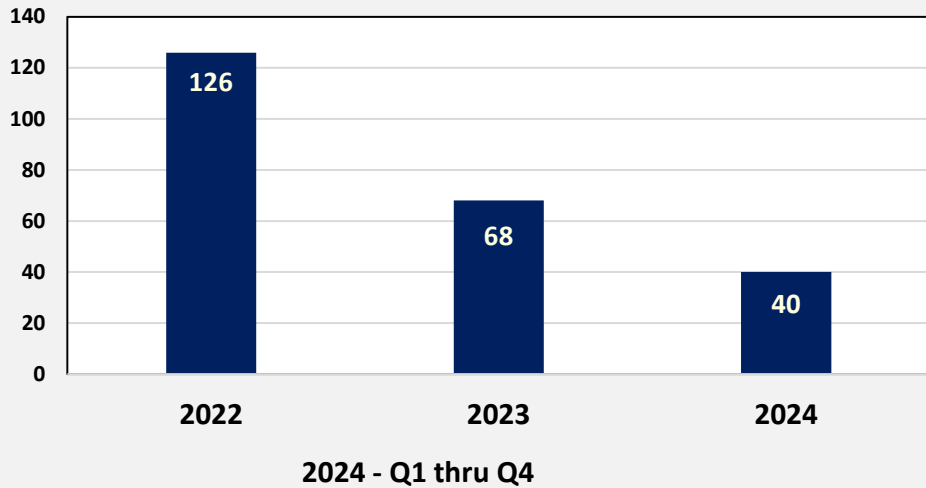
Police Service Calls: Calls for Service or CAD Tickets as we refer to them, are generated when police activity of any type is performed, either by the officer being dispatched (such as an alarm or medical call, etc.), action initiated on his own (motor vehicle stops, vacant house checks, etc.) or scheduled activities such as court appearances. While there has been an overall increase in the number of calls that the Police Department responds to over the last several years, the increase shown in the graph also reflects a change in dispatch protocol. CFS reports are now generated for more of the activities that we have always performed such as daily school safety inspections, motor vehicle stops arising from stationary traffic details and commercial business checks. This change was made in order to track activity so that we may redeploy police personnel and assets as needed.

Traffic Summonses



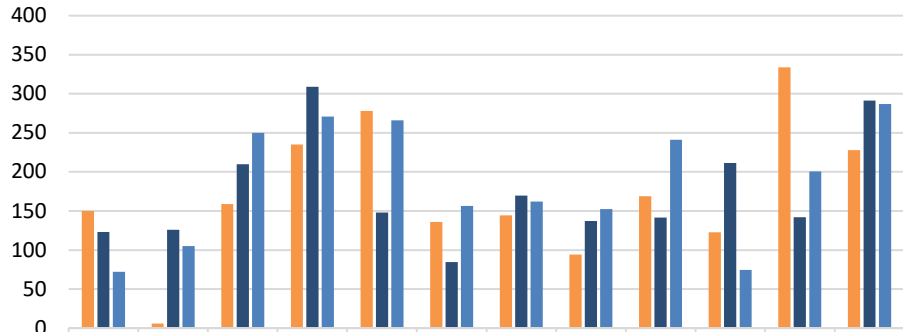
Traffic Summonses: The Traffic Summons graph reflects the total number of traffic summonses issued by officers for traffic offenses as defined by NJ Title 39 Traffic Laws and violations of Borough traffic offenses such as parking violations. Intermittent spikes in summons production totals are usually found in months where extra patrols are performed due to grants such as "Click it or Ticket", "Drive Sober or Get Pulled Over", "Distracted Driving Crackdown" or when we conduct a Motor Vehicle Inspection Checkpoint in conjunction with the New Jersey Division of Motor Vehicles. The department also initiates "Enforcement and Education" details periodically which may also result in an increase in summonses issued. Staffing levels and call volume, among other variables, will have an effect on this number.

Total crimes



Total crimes: The "Total Crimes" graph represents the number of crimes reported to the FBI on the monthly Uniform Crime Report (UCR). The crimes reported in the monthly UCR report are: Homicide, Rape, Robbery, Assault, Burglary, Larceny, Motor Vehicle Theft and Arson. The "Total Crimes" graph does not reflect non-criminal arrests made by the Police Department.

Police Hours - Overtime



	Jan	Feb	Mar	Apr	May	Jun	Jul	Aug	Sep	Oct	Nov	Dec
2022	150	6	159	235	278	136	144.5	94	169	122.5	334	228
2023	123	126	210	309	148	85	170	137	142	212	142	292
2024	72	105	250	271	266	157	162	153	241	75	201	287

Police Hours - Overtime: The total number of overtime hours worked by all sworn municipal law enforcement officers, including administrative and management personnel.