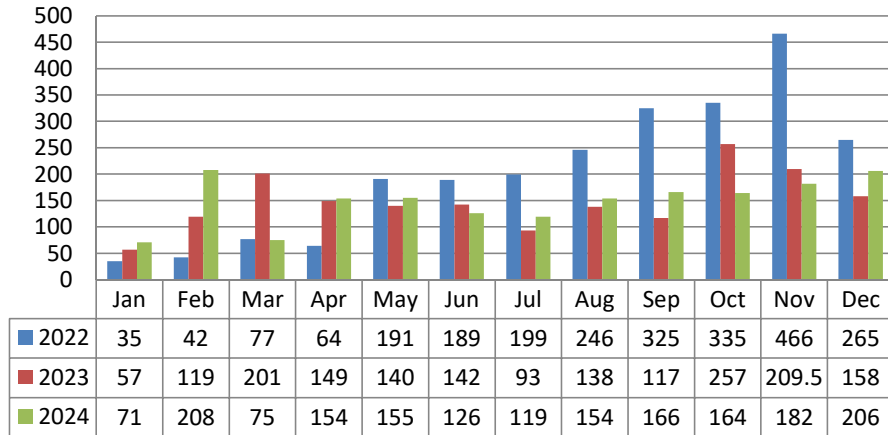


## DPW - As of December 2024

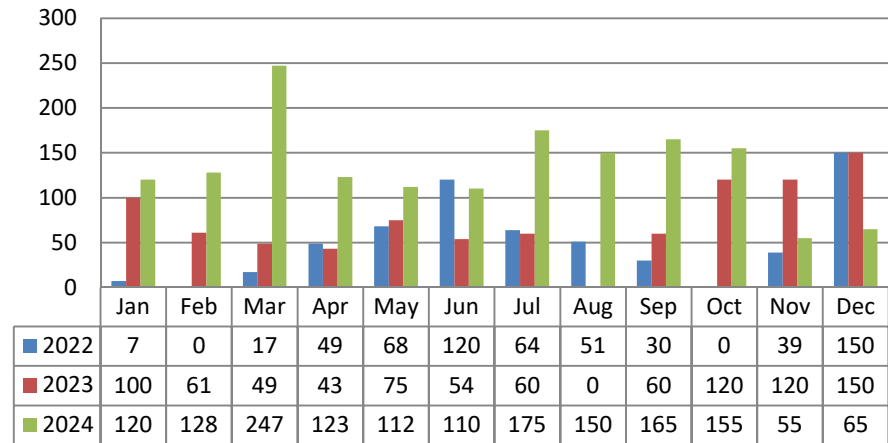
### Buildings - total hours



#### **Buildings - Total Hours:**

The DPW measures time spent on building maintenance, including maintenance of Borough Hall, Parson Pond Park Building, Concession Stand, Fire Dept Buildings, Ambulance Corps., DPW Garage, Police Dept. & OEM Building

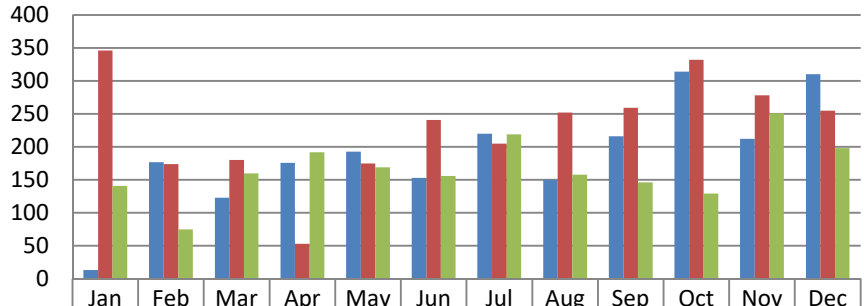
### Stormwater Management - total hours



#### **Stormwater Management - Total Hours:**

The DPW measures time spent on Storm Water Management, including catch basin repairs, cleaning, drainage & dredging

### Road Maintenance - total hours

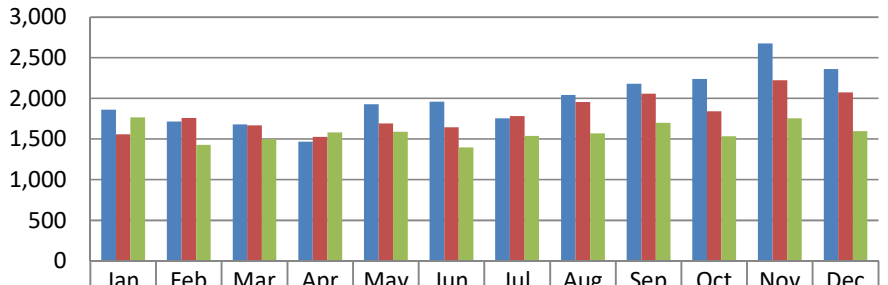


■ 2022	13.5	177	123	176	193	153	220	150	216	314	212	310
■ 2023	346	174	180	53	175	241	205	252	259	332	278	255
■ 2024	141	75	160	192	169	156	219	158	146	129	251	198

#### Road Maintenance - Total Hours:

The DPW measures time spent on road maintenance, including tree trimming/removal, blacktop, cracksealing, street/road signs, street sweepings, and crosswalk/stop bars/markings

### Total Hours



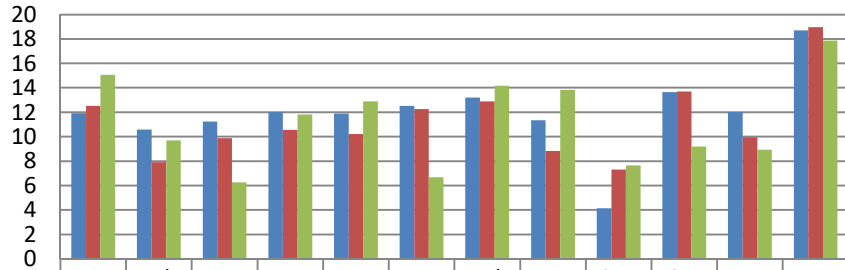
■ 2022	1862	1716	1681	1465	1931	1960	1756	2043	2180	2239	2678	2362
■ 2023	1556	1760	1672	1524	1693	1647	1785	1958	2061	1843	2227	2074
■ 2024	1768	1428	1498	1582	1588	1397	1537	1570	1701	1533	1759	1594

#### Total Hours:

Total hours spent on all activities.

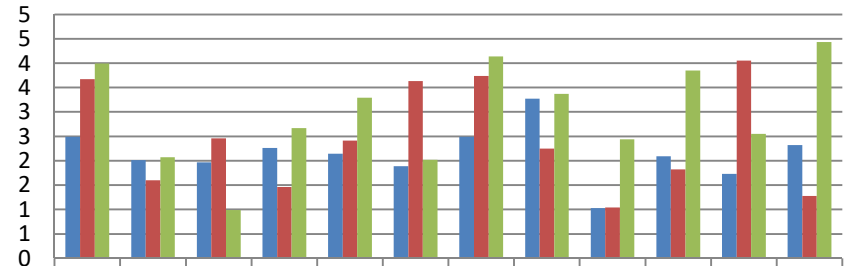
# DPW Hauling

## Cardboard/Paper (tons)



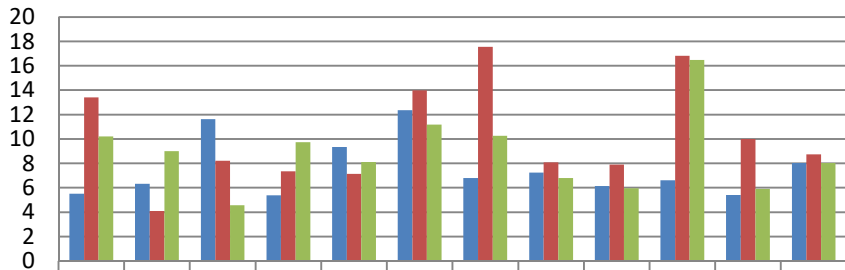
■ 2022	11.92	10.58	11.23	12.03	11.89	12.52	13.21	11.34	4.15	13.65	12.03	18.7
■ 2023	12.51	7.91	9.87	10.56	10.22	12.25	12.89	8.82	7.31	13.7	9.94	18.95
■ 2024	15.07	9.68	6.26	11.81	12.88	6.68	14.17	13.83	7.65	9.19	8.94	17.87

## Comingled (tons)



■ 2022	2.49	2.01	1.97	2.26	2.143	1.89	2.49	3.27	1.03	2.09	1.73	2.32
■ 2023	3.67	1.6	2.46	1.46	2.41	3.63	3.74	2.25	1.04	1.82	4.05	1.28
■ 2024	3.99	2.07	0.99	2.67	3.29	2.02	4.14	3.37	2.44	3.85	2.55	4.43

## Metal (tons)



■ 2022	5.51	6.33	11.63	5.39	9.33	12.36	6.8	7.24	6.13	6.62	5.41	8.03
■ 2023	13.41	4.09	8.21	7.35	7.13	13.98	17.55	8.08	7.91	16.82	10.01	8.75
■ 2024	10.2	9.01	4.57	9.74	8.11	11.17	10.25	6.8	5.95	16.47	5.9	8.02